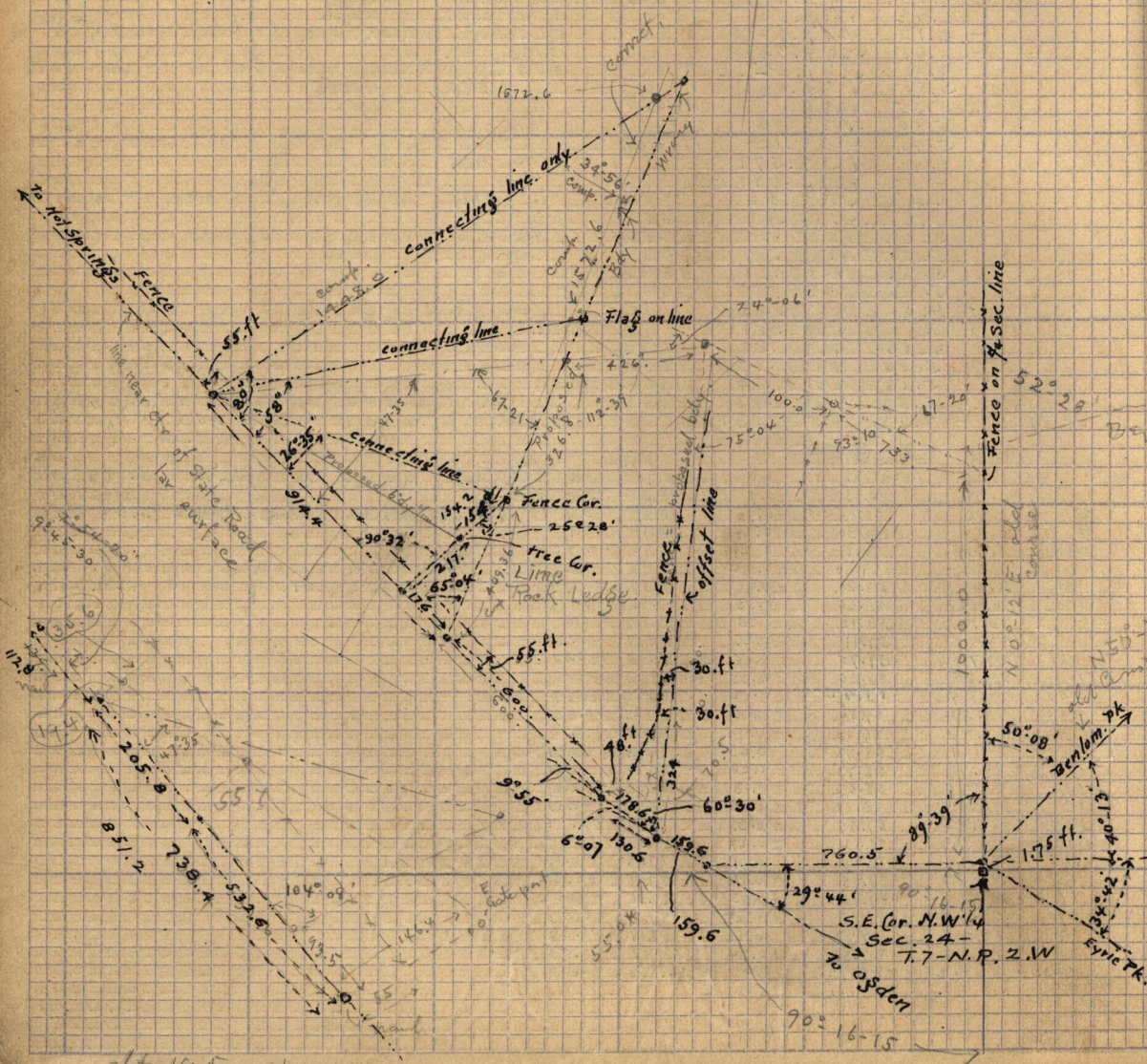


28

Apr. 21-1919

Survey of Linn, Rock ledge
near Hot Springs - Cor. County
or state.
in N.W. 1/4 Sec. 24 - T. 7. N. R. 2 W.

See Book G - 127-28
30-32-129-
See Book E 179-58-59-124
See F- 184-40-
See Book L 189-189-



abt 140 acres